

# TOLCO seismic bracing solution updates and cross references

Effective September 21, 2020, the TOLCO Fig. 980, Fig. 4L, Fig. 910 and Fig. 906 series have been updated to the new UL203A standard.

Due to this change, many of the catalog and material numbers have been discontinued and have cross references to new catalog and material numbers, while others retain their same catalog and material numbers with product feature enhancements.

## TOLCO Fig. 906 sway brace multi-fastener adapter

The new Fig. 906 is now available with a longer 12" hole span. It is UL Listed and can be used to center the anchors on the two lower flues of the metal deck and to increase the load capacity of the anchors.

Enhanced Fig. 906	
Material Number	Catalog Number
13512899	FIG. 906-12 1 & 1 1/4 H1&H2, 1/2 EG
13512898	FIG. 906-12 1 & 1 1/4 H1&H2, 11/16 PLN
13512940	FIG. 906-12 1 & 1 1/4 H1&H2, 13/16 PLN
13512891	FIG. 906-12 1 & 1 1/4 H1&H2, 3/4 EG
13512892	FIG. 906-12 1 & 1 1/4 H1&H2, 3/4 PLN
13512893	FIG. 906-12 1 & 1 1/4 H1&H2, 3/8 PLN
13512894	FIG. 906-12 1 & 1 1/4 H1&H2, 5/8 PLN
13512895	FIG. 906-12 1 & 1 1/4 H1&H2, 9/16 EG
13512896	FIG. 906-12 1 & 1 1/4 H1&H2, 9/16 HDG
13512897	FIG. 906-12 1 & 1 1/4 H1&H2, 9/16 PLN



Fig. 906

## TOLCO Fig. 910 swivel sway brace attachment

Design to brace pipe against sway and seismic disturbances, the Fig. 910 is used with the Fig. 1001, Fig. 1000 or Fig. 4L and joined with a brace pipe per NFPA 13.

Fig. 910 Cross References			
Fig. 910 discontinued		Fig. 910 cross reference	
Material Number	Catalog Number	New Material Number	New Catalog Number
Y33701004E	FIG. 910 1 X 1/2HL-EG	13513501	FIG. 910 1X1/2 EG
Y33701005E	FIG 910-1-X-5/8HL-EG	n/a	n/a
Y33701006E	FIG 910-1-X-3/4HL-EG	n/a	n/a

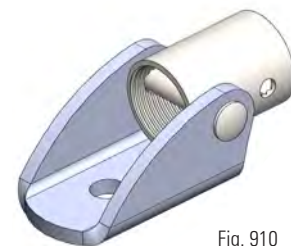


Fig. 910



Powering Business Worldwide

## TOLCO Fig. 980 universal sway brace attachment

Designed to attach to the structure or structural attachment and is used with strut or pipe as a brace member with improved loads.

The chart below shows the cross reference from the old catalog and material number to the new catalog and material number that meets the new UL203A standard.

Fig. 980 Cross References			
Old Fig. 980 discontinued		Fig. 980 cross reference	
Material Number	Catalog Number	New Material Number	New Catalog Number
Y3410003	FIG-980-3/8 PLN	13520712	FIG. 980 3/8 PLN
Y3410003E	FIG-980-3/8 EG	13520713	FIG. 980 3/8 EG
Y3410003HDG	FIG 980 3/8HL UNIVBRCATT HDG	13520714	FIG. 980 3/8 HDG
12547686	FIG 980S 3/8" HL UNIVBRCATT SS 316	13520715	FIG. 980S 3/8 316
Y3410004	FIG 980-1/2-PLN	13520883	FIG. 980 1/2 PLN
Y3410004E	FIG 980-1/2-EG	13520884	FIG. 980 1/2 EG
Y3410004HDG	FIG 980 1/2HL UNIVBRCATT HDG	13520885	FIG. 980 1/2 HDG
Y341000S316	FIG 980S 1/2" HL UNIVBRCATT SS 316	13520886	FIG. 980S 1/2 316
Y3410005	FIG-980-5/8 PLN	13520023	FIG. 980 5/8 PLN
Y3410005E	FIG 980-5/8HL-EG	13520024	FIG. 980 5/8 EG
Y3410005HDG	FIG 980 5/8HL UNIVBRCATT HDG	13520025	FIG. 980 5/8 HDG
12232579	FIG. 980S 5/8" HL UNIVBRCATT 316	13520026	FIG. 980S 5/8 316
Y3410006	FIG-980-3/4 PLN	13520735	FIG. 980 3/4 PLN
Y3410006E	FIG-980-3/4 EG	13520736	FIG. 980 3/4 EG
Y3410006HDG	FIG 980 3/4HL UNIVBRCATT HDG	13520737	FIG. 980 3/4 HDG
12206806	FIG. 980S 3/4" HL UNIVBRCATT 316	13520738	FIG. 980S 3/4 316
Y341007HE	FIG 980H 7/8" HEAVEDUTUNIVBRCATT EG	13520487	FIG. 980H 7/8 EG
12241357	FIG. 980H 7/8" HEAVEDUTUNIVBRCATT HDG	13520488	FIG. 980H 7/8 HDG
Y341010HE	FIG 980H 1 EG	13520484	FIG. 980H 1 EG
12686685	FIG. 980H 1" HDG	13520485	FIG. 980H 1 HDG
Y341012HE	FIG 980H 1-1/4" HEAVEDUTUNIVBRCATT EG	13521031	FIG. 980H 1 1/4 EG
12686687	FIG 980H 1-1/4" HDG	13521032	FIG. 980H 1 1/4 HDG



Fig. 980

Fig. 980 Additional New Numbers	
New Material Number	New Catalog Number
13520489	FIG. 980H 1 PLN
13521030	FIG. 980H 1 1/8 HDG
13521031	FIG. 980H 1 1/4 EG

## TOLCO Fig. 4L longitudinal and lateral brace attachment

Designed to attach to system pipe from 1" to 12" and is used with strut channel or pipe as the brace member. UL listed as both a longitudinal and lateral brace with break-off torque nuts on the pipe clamp, consolidating multiple TOLCO products into a single seismic bracing solution.

Refer to the chart below for the cross from the discontinued Fig. 4LA to the Fig. 4L.

Fig. 4L Cross References			
Old Fig. 4L discontinued		New Fig. 4L cross reference	
Material Number	Catalog Number	New Material Number	New Catalog Number
Y088020	FIG 4L 2" PIPECL EQB PLN	13521185	FIG. 4L 2PLN
Y088020E	FIG 4L 2" PIPECL EQB EG	13521183	FIG. 4L 2EG
12654334	FIG. 4L 2" PIPECL HDG W/ SS6 HDW	13521184	FIG. 4L 2HDG
Y088024	FIG 4L 2 1/2 PLN	13521338	FIG. 4L 2 1/2PLN
Y088024E	FIG 4L 2 1/2" PIPECL EQB EG	13521336	FIG. 4L 2 1/2EG
Y088024HDG	FIG 4L 2 1/2" PIPECL HDG	13521337	FIG. 4L 2 1/2HDG
Y088030	FIG. 4L 3" PLN	13521168	FIG. 4L 3PLN
Y088030E	FIG 4L 3 EG	13521166	FIG. 4L 3EG
12654335	FIG 4L 3" PIPECL HDG W/SS6 HDW	13521167	FIG. 4L 3HDG
Y088030HDG	FIG 4L 3" PIPECL HDG	13521167	FIG. 4L 3HDG
Y088034	FIG 4L 3 1/2" PIPECL EQB PLN	13521342	FIG. 4L 3 1/2PLN
Y088040	FIG 4L 4 PLN	13521456	FIG. 4L 4PLN
Y088040E	FIG 4L 4 EG	13521457	FIG. 4L 4EG
Y088040HDG	FIG 4L 4" PIPECL HDG	13521458	FIG. 4L 4HDG
12654336	FIG 4L 4" PIPECL HDG W/SS6 HDW	13521458	FIG. 4L 4HDG
Y088050	FIG 4L 5-PLN	13521312	FIG. 4L 5PLN
Y088050E	FIG 4L 5 EG	13521313	FIG. 4L 5EG
Y088060	FIG 4L 6 PLN	13521128	FIG. 4L 6PLN
Y088060E	FIG 4L 6 EG	13521129	FIG. 4L 6EG
Y088060HDG	FIG 4L 6" PIPECL HDG	13521430	FIG. 4L 6HDG
12654337	FIG 4L 6" PIPECL HDG W/SS6 HDW	13521430	FIG. 4L 6HDG
Y088080	FIG 4L 8 PLN	13521322	FIG. 4L 8PLN
Y088080E	FIG 4L 8 EG	13521323	FIG. 4L 8EG
Y088080HDG	FIG 4L 8" PIPECL HDG	13521324	FIG. 4L 8HDG
12654338	FIG 4L 8" PIPECL HDG W/SS6 HDW	13521324	FIG. 4L 8HDG



Fig. 4L

## TOLCO Fig. 4L longitudinal and lateral brace attachment

Additional new numbers, with no cross reference.

New Material Code	New Catalog #	New Material Code	New Catalog #
<b>Fig. 4L Additional New Numbers</b>		<b>Fig. 4L Additional New Numbers cont'd.</b>	
13521069	FIG. 4L 1 1/4" SWAY BRACE ATTACHMENT HDG	13521404	FIG. 4L 125MM SWAY BRACE ATTACHMENT HDG
13521301	FIG. 4L 65MM SWAY BRACE ATTACHMENT PLN	13521475	FIG. 4L 6" SWAY BRACE ATTACHMENT 316
13521302	FIG. 4L 65MM SWAY BRACE ATTACHMENT EG	13521406	FIG. 4L 150MM SWAY BRACE ATTACHMENT PLN
13521303	FIG. 4L 65MM SWAY BRACE ATTACHMENT HDG	13521407	FIG. 4L 150MM SWAY BRACE ATTACHMENT EG
13521340	FIG. 4L 3 1/2" SWAY BRACE ATTACHMENT EG	13521408	FIG. 4L 150MM SWAY BRACE ATTACHMENT HDG
13521341	FIG. 4L 3 1/2" SWAY BRACE ATTACHMENT HDG	13521470	FIG. 4L 200MM SWAY BRACE ATTACHMENT PLN
13521474	FIG. 4L 4" SWAY BRACE ATTACHMENT 316	13521471	FIG. 4L 200MM SWAY BRACE ATTACHMENT EG
13521311	FIG. 4L 5" SWAY BRACE ATTACHMENT HDG	13521472	FIG. 4L 200MM SWAY BRACE ATTACHMENT HDG
13521402	FIG. 4L 125MM SWAY BRACE ATTACHMENT PLN	13521288	FIG. 4L 10" SWAY BRACE ATTACHMENT HDG
13521403	FIG. 4L 125MM SWAY BRACE ATTACHMENT EG	13521502	FIG. 4L 12" SWAY BRACE ATTACHMENT HDG

## TOLCO Fig. 4A

Fig. 4LA is discontinued. Refer to the chart below for suggested alternatives.

<b>Fig. 4A Suggested Alternatives</b>					
<b>Fig. 4A discontinued</b>		<b>Alternative #1 Sway brace pipe clamp</b>		<b>Alternative #2 Pipe clamp only</b>	
Material Number	Catalog Number	Material Number	Catalog Number	Material Number	Catalog Number
13101515	FIG.4A-2 1/2-316SS	n/a	n/a	78101107439	B3140-2 1/2SS4
Y085024	FIG 4A 2-1/2 PLN	13521338	FIG. 4L 2 1/2PLN	78101107436	B3140-2 1/2PLN
Y085024E	FIG 4A 2-1/2 EG	13521336	FIG. 4L 2 1/2EG	78101107437	B3140-2 1/2ZN
Y085030	FIG 4A 3 PLN	13521168	FIG. 4L 3PLN	78101107442	B3140-3PLN
Y085030E	FIG 4A 3 EG	13521166	FIG. 4L 3EG	78101107443	B3140-3ZN
Y085040	FIG 4A 4 PLN	13521456	FIG. 4L 4PLN	78101107454	B3140-4PLN
Y085040304	FIG 4A 4" PIPECL EQB 304	13521474	FIG. 4L 4316	78101175414	B3140-4SS4
Y085040316	FIG 4A 4" PIPECL EQB 316	13521474	FIG. 4L 4316	11637785	B3140-4SS6
Y085040E	FIG 4A 4 EG	13521457	FIG. 4L 4EG	78101107455	B3140-4ZN
Y085040HDG	FIG 4A 4" PIPECL EQB HDG	13521458	FIG. 4L 4HDG	78101175411	B3140-4HDG
Y085050	FIG 4A 5 PLN	13521312	FIG. 4L 5PLN	78101107460	B3140-5PLN
Y085050E	FIG 4A 5 EG	13521313	FIG. 4L 5EG	78101107461	B3140-5ZN
Y085060	FIG 4A 6 PLN	13521128	FIG. 4L 6PLN	78101107466	B3140-6PLN
Y085060304	FIG 4A 6" PIPECL EQB 304	13521475	FIG. 4L 6316	78101175426	B3140-6SS4
Y085060316	FIG 4A 6" PIPECL EQB 316	13521475	FIG. 4L 6316	78101175427	B3140-6SS6
Y085060E	FIG 4A 6 EG	13521129	FIG. 4L 6EG	78101107467	B3140-6ZN
Y085060HDG	FIG 4A 6" PIPECL EQB HDG	13521430	FIG. 4L 6HDG	78101175424	B3140-6HDG
Y085080	FIG 4A 8 PLN	13521322	FIG. 4L 8PLN	78101107472	B3140-8PLN
Y085080E	FIG 4A 8 EG	13521323	FIG. 4L 8EG	78101107473	B3140-8ZN
12280177	FIG. 4A 8" PIPECL EQB 316	n/a	n/a	12105319	B3140-8SS6
Y085080HDG	FIG 4A 8" PIPECL EQB HDG	13521324	FIG. 4L 8HDG	78101175430	B3140-8HDG
Y085100E	FIG 4A 10 PIPECL EQB EG	13521490	FIG. 4L 10EG	78101107479	B3140-10ZN
Y085100HDG	FIG 4A 10" PIPECL EQB HDG	13521288	FIG. 4L 10HDG	78101175364	B3140-10HDG
Y085120	FIG 4A 12" PIPECL EQB PLN	13521500	FIG. 4L 12PLN	78101107484	B3140-12PLN
Y085120E	FIG 4A 12" PIPECL EQB EG	13521501	FIG. 4L 12EG	78101107485	B3140-12ZN
Y085120HDG	FIG 4A 12" PIPECL EQB HDG	13521502	FIG. 4L 12HDG	78101175377	B3140-12HDG

## TOLCO Fig. 4LA

Fig. 4LA is discontinued. Refer to the chart below for suggested alternatives.

Fig. 4LA Cross References			
Fig. 4LA discontinued		Cross reference to Fig. 4L	
Material Number	Catalog Number	New Material Number	New Catalog Number
Y093010	FIG 4LA-1" PLN	13521268	FIG. 4L 1PLN
Y093010E	FIG 4LA-1" EG	13521269	FIG. 4L 1EG
Y093010HDG	FIG 4LA-1" HDG W/EG HDW	13521310	FIG. 4L 1HDG
Y093012	FIG 4LA-1 1/4" PLN	13521067	FIG. 4L 1 1/4PLN
Y093012E	FIG 4LA-1 1/4" EG	13521068	FIG. 4L 1 1/4EG
Y093014	FIG 4LA-1 1/2" PLN	13521219	FIG. 4L 1 1/2PLN
Y093014E	FIG 4LA-1 1/2" EG	13521218	FIG. 4L 1 1/2EG
Y093014HDG	FIG 4LA-1 1/2-HDG-W/EG-HDW	13521320	FIG. 4L 1 1/2HDG
Y093020	FIG 4LA-2" PLN	13521185	FIG. 4L 2PLN
Y093020E	FIG 4LA-2" EG	13521183	FIG. 4L 2EG
Y093020HDG	FIG 4LA-2" HDG W/EG HDW	13521184	FIG. 4L 2HDG
Y093024	FIG 4LA-2 1/2" PLN	13521338	FIG. 4L 2 1/2PLN
Y093024E	FIG 4LA-2 1/2" EG	13521336	FIG. 4L 2 1/2EG
Y093024HDG	FIG.4LA-2-1/2-HDG-W/EG-HDW	13521337	FIG. 4L 2 1/2HDG
Y093030	FIG 4LA-3" PLN	13521168	FIG. 4L 3PLN
Y093030E	FIG 4LA-3" EG	13521166	FIG. 4L 3EG
Y093030HDG	FIG. 4LA-3" HDG W/EG HDW	13521167	FIG. 4L 3HDG
Y093034	FIG 4LA-3 1/2" PLN	13521342	FIG. 4L 3 1/2PLN
Y093040	FIG 4LA-4" PLN	13521456	FIG. 4L 4PLN
Y093040E	FIG 4LA-4" EG	13521457	FIG. 4L 4EG
Y093040HDG	FIG 4LA-4" HDG W/EG HDW	13521458	FIG. 4L 4HDG
Y093050	FIG 4LA-5" PLN	13521312	FIG. 4L 5PLN
Y093050E	FIG 4LA-5" EG	13521313	FIG. 4L 5EG
Y093060	FIG 4LA-6" PLN	13521128	FIG. 4L 6PLN
Y093060E	FIG 4LA-6" EG	13521129	FIG. 4L 6EG
Y093060HDG	FIG 4LA-6" HDG W/EG HDW	13521430	FIG. 4L 6HDG
Y093080	FIG 4LA-8" PLN	13521322	FIG. 4L 8PLN
Y093080E	FIG 4LA-8" EG	13521323	FIG. 4L 8EG
Y093080HDG	FIG 4LA-8" HDG W/EG HDW	13521324	FIG. 4L 8HDG
12547323	FIG 4LA-NS-10" PLN	13521289	FIG. 4L 10PLN
12547325	FIG 4LA-NS-10" EG	13521490	FIG. 4L 10EG
Y093120	FIG 4LA-12" PLN	13521500	FIG. 4L 12PLN
Y093120E	FIG 4LA-12" EG	13521501	FIG. 4L 12EG

Eaton has made every effort to ensure the integrity of the contents of this document. However, Eaton cannot accept responsibility for errors that may have been caused by changing part numbers, typographical or clerical errors in the preparation of this document.